

# 会いたくて会いたくて

西野カナ

GIORGIO CANCEMI 作曲  
矢賀部 竜成 編曲

## 四重奏 Clarinet

Allegro non troppo (♩=110)  
*elegiaco*

A

Musical score for the beginning of the piece, featuring four clarinet parts and piano accompaniment. The score is in 4/4 time, key of B-flat major, and tempo of Allegro non troppo (♩=110). The mood is elegiac. The piano part starts with a *mp* dynamic. A rehearsal mark 'A' is placed above the first staff.

Cl.1

Detailed musical notation for the first clarinet part (Cl.1). The notation includes a key signature change to B-flat major and a tempo change to Allegro non troppo. The part features a melodic line with eighth and sixteenth notes, often beamed together, and rests. The piano accompaniment provides harmonic support with chords and moving bass lines.

# B $\flat$ Clarinet 1

## 会いたくて会いたくて

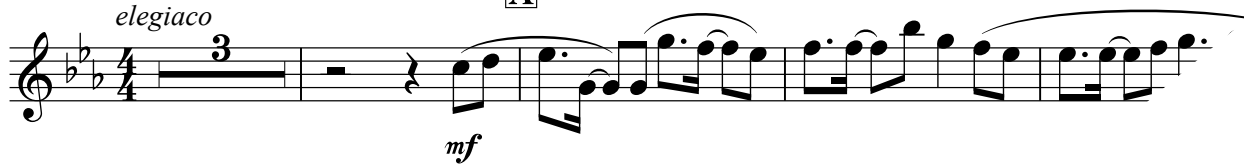
西野カナ

GIORGIO CANCEMI 作曲

矢賀部 竜成 編曲

Allegro non troppo (♩=110) **A**

*elegiaco*



**B**



**C**



**G**



**H**

